

Kit Content

	36rxn	
Syringe	36	set
Elution Tube	36	pcs
AD20100 Cartridge	36	set
AD20100 Column Set	36	set
AD20100 Tip Set	36	set
EtOH Tube	36	pcs
Sample Tube	36	pcs
Buffer DTL	40	ml
Proteinase K	40	mg
PK Solvent	5	ml

Kit Storage

- Upon arrival,
1. Please store **Proteinase K** at **-20 °C** for long term storage.
 2. Solvent and consumables, please store at 15-25 °C.

Kit Preparation

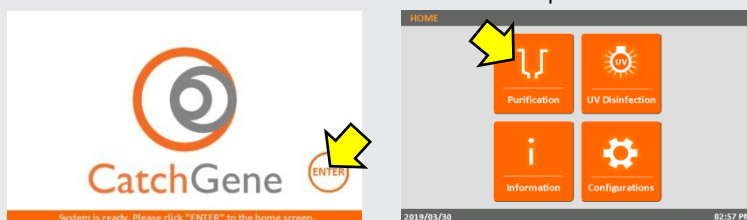
1. **Prepare 10 mg/ml Proteinase K**
For 40 mg Proteinase K, please add 4 ml PK Solvent into tube and vortex thoroughly for dissolving.
After dissolving into solvent, please store in 4°C for 6 month or -20°C for 1 year.

General Pretreatment for Tissue Sample

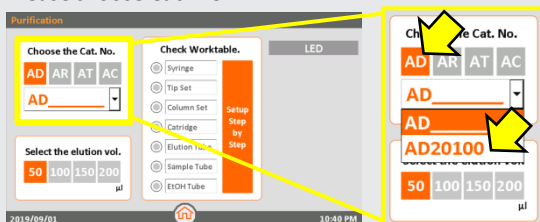
1. Weight up to 50 mg of animal tissue or no more than 20 mg spleen tissue.
2. Homogenize tissue samples by one of following methods.
 - A. Homogenize tissue sample with liquid nitrogen.
Grind tissue sample thoroughly with liquid nitrogen by beads beater, tissue homogenizer or mortar & pestle. Proceed with step 3.
 - B. Homogenize tissue sample with buffer.
Place tissue sample into 2 ml micro-centrifuge tube (not provided) containing 500 µl PBS. Homogenize samples with homogenizer thoroughly. Add 500 µl Buffer DTL and proceed with step 4.
3. Add 1000 µl Buffer DTL, vortex vigorously for 30 sec.
4. Add 100 µl Proteinase K, vortex for 15 sec then incubate at 60 °C for 15-30 min or until all tissue lysed properly.
5. Centrifuge at 11,000 x g for 3 min.
6. Transfer 1000µl of supernatant into the Sample Tube.

Step by Step to start a AD20100 Purification Run

1. On the **Start** screen: Click "ENTER" button to enter the HOME screen.
2. On the **HOME** screen: Click "Purification" icon to start a purification run.

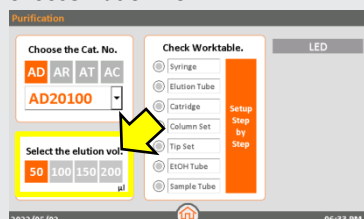


3. Please choose **Cat. No.**



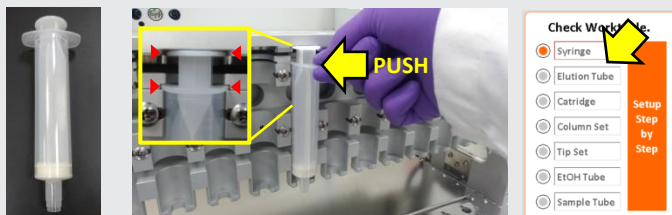
Please click "**AD**"
Then choose "**AD20100**"
For iCatcher® Tissue DNA 1000 Kit

4. Choose **Elution Vol.**



We suggest to elute in **50-200µl** for iCatcher® Tissue DNA 1000 Kit.

5. Insert the **Syringe** into the groove of Syringe Seat and push it to the end.



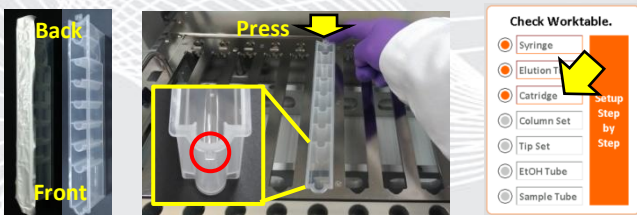
Check the **Syringe**.

6. Labeling, then open the lid and place the **Elution Tube** on the Elution Tube position.



Check the **Elution Tube**.

7. Insert the front protrude part of **Cartridge** into Cartridge position and press the bottom down. Then remove the foil.



Check the **Cartridge**.

Important! Please must remove the foil before running a protocol.

8. Insert **Column Set** into Column Set position and press into bottom.



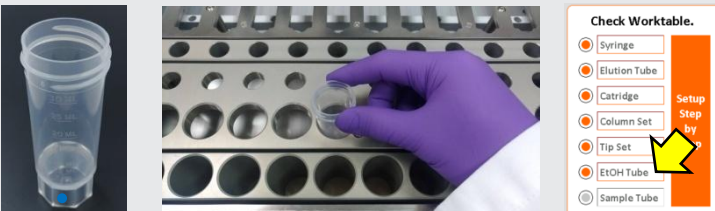
Check the **Column Set**.

9. Place **Tip Set** on Tip Set position and press into bottom.



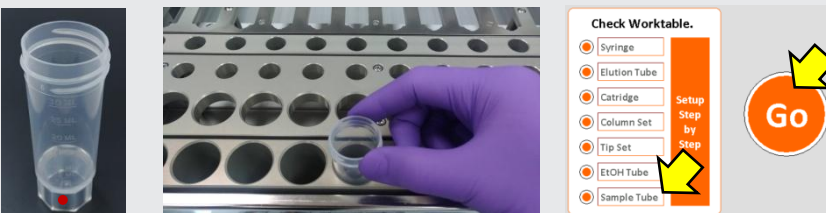
Check the **Tip Set**.

10. Add **15 ml** 100% EtOH into **EtOH Tube** and place on the EtOH Tube position.



Add **15 ml** 100% EtOH for AD20100
Check the **EtOH Tube**.

11. Prepare sample and load the **Sample Tube** into the Sample Tube position.



Check the **sample Tube**.
Click "Go" to start purification.



FOR RESEARCH USE ONLY