

## Kit Content

|                    | 36rxn |     |
|--------------------|-------|-----|
| Syringe            | 36    | set |
| Elution Tube       | 36    | pcs |
| AD10400 Cartridge  | 36    | set |
| AD10400 Column Set | 36    | set |
| AD10400 Tip Set    | 36    | set |
| EtOH Tube          | 36    | pcs |
| Sample Tube        | 36    | pcs |
| Proteinase K       | 150   | mg  |
| PK Solvent         | 20    | ml  |

## Kit Storage

Upon arrival,

1. Please store **Proteinase K** at **-20 °C** for long term storage.
2. Solvent and consumables, please store at 15-25 °C.

## Kit Preparation

### 1. Prepare 10 mg/ml Proteinase K

For 150 mg Proteinase K, please add 15 ml PK Solvent into tube and vortex thoroughly for dissolving.  
After dissolving into solvent, please store in 4°C for 6 month or -20°C for 1 year.

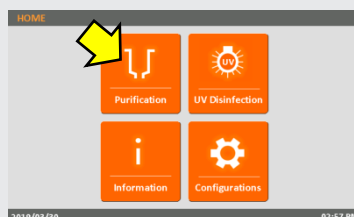
## Sample Pretreatment

*Important! Please store at 4 °C if you don't extract whole blood immediately. Even if you store at 4 °C do not over 10 days.*

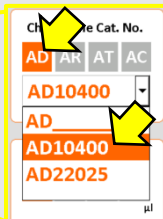
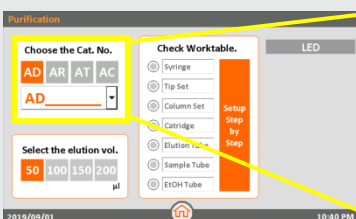
1. The fresh whole blood do not store at room temperature over 2 hours.
2. If your whole blood sample were stored at 4°C. Please thaw samples at room temperature (15-25°C) 15 minutes.
3. When you extraction whole blood sample, you need to inverting the blood collection tube 20 times to mix the sample.

## Step by Step to start a AD10400 Purification Run

1. On the **Start** screen: Click "ENTER" button to enter the HOME screen.
2. On the **HOME** screen: Click "Purification" icon to start a purification run.

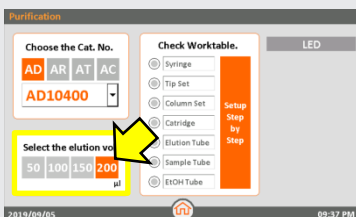


### 3. Please choose Cat. No.



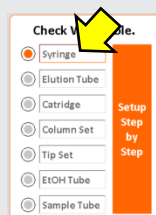
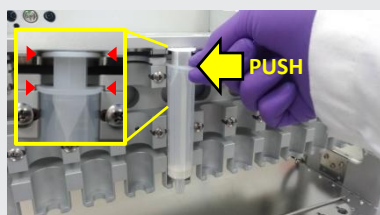
Please click "AD"  
Then choose "AD10400"  
For iCatcher® DNA 4000 Kit

### 4. Choose Elution Vol.



We suggest to elute in **200µl** for iCatcher® DNA 4000 Kit.

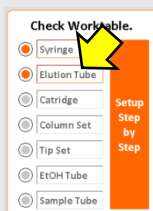
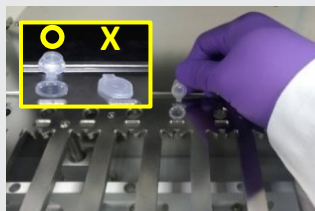
### 5. Insert the Syringe into the groove of Syringe Seat and push it to the end.



Check the **Syringe**.

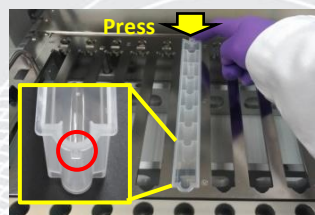
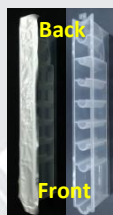
**FOR RESEARCH USE ONLY**

6. Labeling , then open the lid and place the **Elution Tube** on the Elution Tube position.



Check the **Elution Tube**.

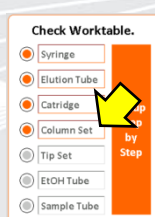
7. Insert the front protrude part of **Cartridge** into Cartridge position and press the bottom down. Then remove the foil.



Check the **Cartridge**.

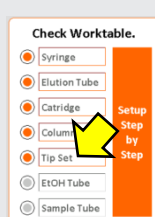
**Important! Please must remove the foil before running a protocol.**

8. Insert **Column Set** into Column Set position and press into bottom.



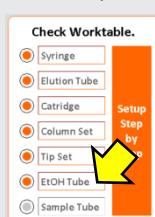
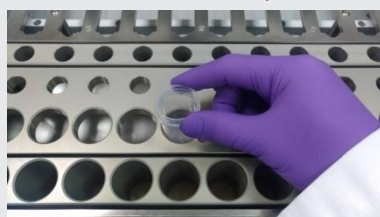
Check the **Column Set**.

9. Place **Tip Set** on Tip Set position and press into bottom.



Check the **Tip Set**.

10. Add **24 ml** 100% EtOH into **EtOH Tube** and place on the EtOH Tube position.

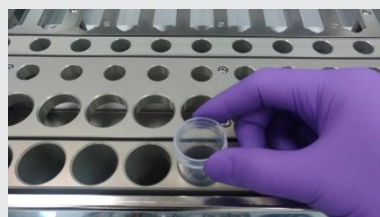


Check the **EtOH Tube**.

Add **24 ml** 100% EtOH into **EtOH Tube**

11. Prepare sample as below,

1. Add 400  $\mu$ l Proteinase K (10 mg/ml) into the bottom of Sample Tube.
2. Transfer 4ml of whole blood sample into the Sample Tube.
3. Load the **Sample Tube** into the Sample Tube position of iCatcher (no need to mix or pipette it).



Check the **Sample Tube**.  
Click "**Go**" to start purification.

**FOR RESEARCH USE ONLY**