

Kit Content

	36rxn	
Syringe	36	set
Elution Tube	36	pcs
AD10100 Cartridge	36	set
AD10100 Column Set	36	set
AD10100 Tip Set	36	set
EtOH Tube	36	pcs
Sample Tube	36	pcs
Proteinase K	45	mg
PK Solvent	5	ml

Kit Storage

Upon arrival,

1. Please store **Proteinase K** at **-20 °C** for long term storage.
2. Solvent and consumables, please store at 15-25 °C.

Kit Preparation

1. **Prepare 10 mg/ml Proteinase K**
For 45 mg Proteinase K, please add 4.5 ml PK Solvent into tube and vortex thoroughly for dissolving.
After dissolving into solvent, please store in 4°C for 6 month or -20°C for 1 year.

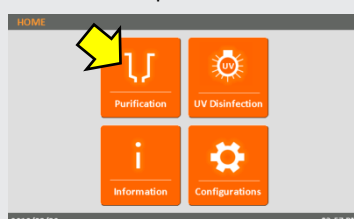
Sample Pretreatment

Important! Please store at 4 °C if you don't extract whole blood immediately. Even if you store at 4 °C do not over 10 days.

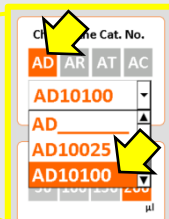
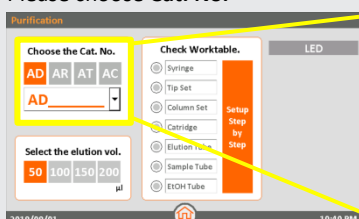
1. The fresh whole blood do not store at room temperature over 2 hours.
2. If your whole blood sample were stored at 4°C. Please thaw samples at room temperature (15-25°C) 15 minutes.
3. When you extraction whole blood sample, you need to inverting the blood collection tube 20 times to mix the sample.

Step by Step to start a AD10100 Purification Run

1. On the **Start** screen: Click "ENTER" button to enter the HOME screen.
2. On the **HOME** screen: Click "Purification" icon to start a purification run.

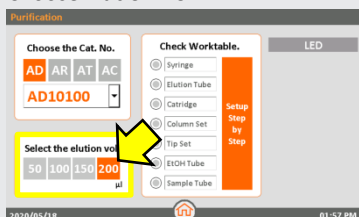


3. Please choose **Cat. No.**



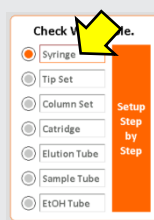
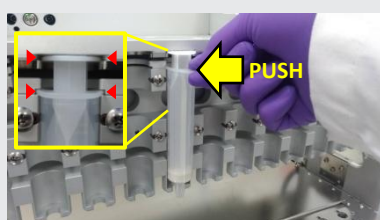
Please click "AD"
Then choose "AD10100"
For iCatcher® DNA 1000 Kit

4. Choose **Elution Vol.**



We suggest to elute in **200µl** for iCatcher® DNA 1000 Kit.

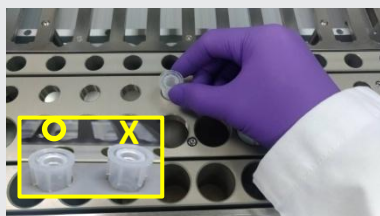
5. Insert the **Syringe** into the groove of Syringe Seat and push it to the end.



Check the **Syringe**.

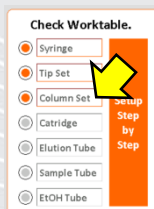
FOR RESEARCH USE ONLY

6. Place **Tip Set** on **Tip Set** position and press into bottom.



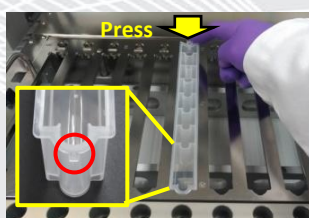
Check the **Tip Set**.

7. Insert **Column Set** into **Column Set** position and press into bottom.



Check the **Column Set**.

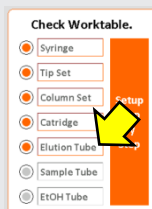
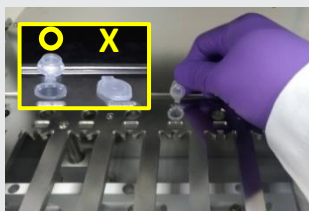
8. Insert the front protrude part of **Cartridge** into **Cartridge** position and press the bottom down. Then remove the foil.



Check the **Cartridge**.

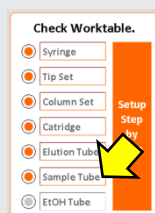
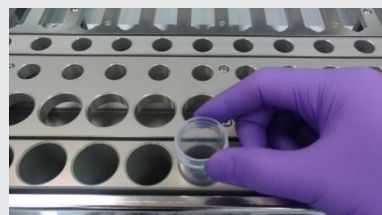
Important! Please must remove the foil before running a protocol.

9. Labeling , then open the lid and place the **Elution Tube** on the **Elution Tube** position.



Check the **Elution Tube**.

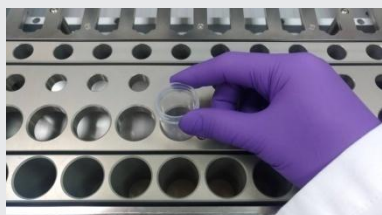
10. Prepare sample and load the Sample Tube into the **Sample Tube** position.



Check the **Sample Tube**.

1. Add 100 μ l Proteinase K (10 mg/ml) into the bottom of Sample Tube.
2. Transfer 1ml of whole blood sample into the Sample Tube.
3. Load the Sample Tube into the Sample Tube position of iCatcher (no need to mix or pipette it).

11. Add **15 ml** 100% EtOH into **EtOH Tube** and place on the **EtOH Tube** position.



Add **15 ml** 100% EtOH for AD10100
Check the **EtOH Tube**.
Click "Go" to start purification.

FOR RESEARCH USE ONLY